

2023 NCWSA Summer Series  
North Coast Women's Sailing Association (NCWSA)  
June 6, 2023 – September 19, 2023  
Edgewater Yacht Club, Cleveland, Ohio USA

## SAILING INSTRUCTIONS (SIs)

*The notation "[DP]" in a rule in these Sailing Instructions ("SIs") means that the penalty for a breach of the rule may, at the discretion of the protest committee, be less than disqualification. The notation "[NP]" in a rule of these SIs means that a boat may not protest another boat for breaking that rule. This changes RRS 60.1(a).*

### 1. RULES

- 1.1 The event is governed by the rules as defined in *The Racing Rules of Sailing*, the rules of the PHRF SS, and the class rules for any class for which a separate class or fleet has been established.
- 1.2 Operating VHF radios are required and shall always be monitored while racing. [NP]
- 1.3 PFDs shall always be worn while racing. [NP]
- 1.4 RRS 61 is changed to include: "A boat intending to protest shall notify the RC PRO of her intention to protest and identify the boat she intends to protest, after clearing the finish line, via the VHF radio channel assigned to her racecourse." [DP][NP]
- 1.5 US Sailing Prescriptions to RRS 63.1 and 63.2 shall not apply.

### 2. CHANGES TO THE SAILING INSTRUCTIONS

- 2.1 Any change to the sailing instructions will be posted before 1800 on the day it will take effect, except that changes to the schedule of races will be posted at least 48 hours prior to the affected race(s).
- 2.2 Changes to the sailing instructions may be made on the water by VHF radio communication on Channel 72 in accordance with Rule 90.2(c).

### 3. COMMUNICATIONS WITH COMPETITORS

- 3.1 Notices to competitors will be posted on Notice Board near the flagpole, at the north side of the EYC patio, and/or online at [www.ncwsa.net](http://www.ncwsa.net)
- 3.2 All boats shall carry a VHF radio capable of communicating on channels 9, 16, 71, and 72. [DP] 3.3 The channel for the Race Committee shall be 72.
- 3.4 On the water, the race committee may make courtesy broadcasts to competitors by VHF radio. Failure to make any broadcast, including failure to hail boats that may be OCS or the order in which OCS boats are hailed, shall not be grounds for redress. Failure to hear any broadcast for any reason shall not be grounds for redress. Race Committee communications that may be overheard shall not be grounds for redress. This changes RRS 62.1.
- 3.5 While racing, except in an emergency, a boat shall not make voice or data transmissions and shall not receive voice or data communication that is not available to all boats. [DP]

### 4. SIGNALS MADE ASHORE

- 4.1 Signals made ashore will be displayed at the flagpole north of the EYC patio.

4.2 When flag AP is displayed ashore, "1 minute" is replaced with "not less than 45 minutes" in the race signal AP. This changes Race Signals AP.

**5. SCHEDULE OF RACES**

- 5.1 The season takes place on Tuesday evenings June 6 – September 19, 2023
  - June 6: Safety Shakedown cruise (get to know the boat, rigging, safety equipment and procedures)
  - June 13: Start clinic on the water
  - June 20: No racing due to CRW
  - June 27: Practice Race with RC
  - July 4: No racing due to Independence Day
  - July 11-September 19: RacesThe racing schedule will be posted on [www.ncwsa.net](http://www.ncwsa.net).
- 5.2 The scheduled time of the warning signal for the first race each day is as follows:
  - June 6- August 15 2023: 1900
  - August 22 - September 19: 1830

**6. CLASS FLAGS**

6.1 The class flags are described on SI Addendum 2.

**7. RACING AREA**

7.1 Racing will take place on Lake Erie. SI Addendum 1 shows the location of the racing area.

**8. COURSES**

- 8.1 The diagram in SI Addendum 1 shows the location of the marks, the compass headings between them and the distance between them. Addendum 1 also shows the courses that will be used in the instance that an RC boat is in use.
- 8.2 Races will either be started off the Edgewater Pavilion and XS or by using an RC boat and a mark.
- 8.3 No later than 1745 (5:45 p.m.) of the day of a race, the race committee will post the courses on the official notice board and announce via VHF radio Channel 72. Failure to hear or otherwise receive such announcements will not be grounds for a request for redress. This changes RRS 60.1(b) and 62.
- 8.4 All Races will be started between the Edgewater Pavilion and XS mark or between an RC Boat and an orange mark.
- 8.5 The order in which marks should be passed will be designated by the "Mark Letter" followed by a subscript of either S or P (indicating that the mark is to be passed to either Starboard or Port)
- 8.6 The following is an *example* of how a course may be designated:

**START XS<sub>S</sub> – G<sub>S</sub> – M<sub>P</sub> - FINISH XS<sub>P</sub>** which indicates that:

START XS shall be on Starboard side of line	Next mark is G, and shall be passed to Starboard	Next mark is M, and shall be passed to Port	FINISH XS shall be on Port side of line
---	---	--	---

- 8.7 When the course is broadcast via VHS channel 72, the International Phonetic Alphabet will be used. Marks will be referred to as XS, Alpha, Bravo, Charlie, Delta, Echo, Foxtrot, Golf, or Hotel. The *example* course given in 8.4 would be read as “ Start: XS to Starboard, Golf to Starboard, Mike to Port, Finish: XS to Port.”

## 9. MARKS

- 9.1 The Mark(s) are white or white and red poles with letter designations A through H, M and XS or orange inflatables. The Cleveland water intake crib and the government mark commonly referred to as the crib buoy may also be used as marks.

## 10. THE START

- 10.1 The ends of the Start Line shall be the mast onshore at the EYC Pavilion displaying an Orange flag and the course side of the EYC “XS” mark, located approx. 500 yards North of the EYC Pavilion or between an RC boat displaying an orange flag and an orange inflatable mark.
- 10.2 RRS 26 (visual signals) will be used. The RC intends to allow approximately 5 (five) minutes between a starting signal and subsequent warning signal.
- 10.3 The RC may attempt to announce via VHF the next class to start after each starting signal.
- 10.4 Boats whose warning signal has not been made shall avoid the starting area during the starting sequence for other classes.
- 10.5 A boat starting later than five (5) minutes after her starting signal will be scored Did Not Start (DNS) without a hearing. This changes rules A5.
- 10.6 Race Committee may, at its own discretion, start multiple classes simultaneously, and shall attempt to announce this via VHF.
- 10.7 Race Committee, at its own discretion, may vary the order of the starting sequence, and shall attempt to announce this via VHF.

## 11. THE FINISH

- 11.1 The ends of the Finish Line shall be the course side of the mast onshore at the EYC Pavilion displaying an Orange flag and the EYC “XS” mark, located approx. 500 yds. North of the EYC Pavilion. This changes Race Signals Blue. In the case of a drop mark course, the finish will be between a designated mark and an orange flag on a race committee boat.
- 11.2 When approaching the finish line, all boats shall hail the RC with their sail number via VHF on Channel 72.

## 12. PENALTY SYSTEM

- 12.1 The first two sentences of RRS 44.1 are changed to: ‘A boat may take a One-Turn Penalty when she may have broken a rule of Part 2 or Rule 31 while racing. However, when she may have broken a rule of Part 2 while in the zone around a mark other than a starting mark, her penalty shall be a Two-Turns Penalty.’
- 12.2 The Scoring Penalty, RRS 44.3 will apply in the event that a coach provides assistance to a boat while racing, including in an emergency. **This includes sitting on the rail helping balance out the boat. Coaches must remain centerline at all times. See Addendum #4.** RRS 44.3 is modified as follows: (1) The boat need not fly a yellow flag, but shall immediately inform the race committee, and (2) the penalty applied under 44.3 shall be 40%.

**13. TIME LIMITS**

13.1 The Mark 1 Time Limit, Race Time Limit (see RRS 35), and the Finishing Window are shown in the table below.

Mark 1 Time Limit	Race Time Limit	Finishing Window
Within 45 minutes of the start.	Ninety (90) minutes after the start	Within thirty (30) minutes after the first boat of the class finishes

If no boat has passed the first mark within the Mark 1 Time Limit, the race will be abandoned.

13.2 The Finishing Window is the time for boats to finish after the first boat of that class sails the course and finishes. Boats failing to finish within the Finishing Window, and not subsequently retiring, penalized or given redress, will be scored Time Limit Expired (TLE) without a hearing.

13.3 Failure to meet the Target Time will not be grounds for redress. This changes RRS 62.1(a).

**14. PROTESTS AND REQUESTS FOR REDRESS**

14.1 Protest forms are available at the EYC Chart Room. Protests and requests for redress or reopening shall be delivered to the NCWSA Race Chair or her designated representative within the protest time limit.

14.2 For each class, the protest time limit is 60 minutes after the last boat of the last class has finished. The Race Committee will post the protest time limit on the official notice board.

14.3 Protests will be heard, if possible, before the next scheduled race day.

**15. SCORING**

15.1 One race is required to be completed to constitute a series.

15.2 Practice Race on June 14 will not be scored.

15.3 Series scores will be posted on ncwsa.net by the NCWSA Scoring Committee. The Low Point scoring system described in Appendix A4 shall apply.

15.4 Rule A5.3 will apply.

15.5 There shall be one throw-out for every four (4) races completed by a class, with a maximum of (2) throw-outs. This changes Appendix A2.1.

15.6 Individual boat crews will be required to serve on Race Committee, thereby not participating in their class for that night. Each boat that does RC duty will be scored as finishing that night's race(s) based on an average of all her scores throughout the season. No scores will be awarded if no racing is held the night of the RC commitment. Boat crews not showing up for their RC commitment will be scored DNC.

15.7 A score of TLE shall be calculated as the number of boats that finished within the time limit plus two (2).

**16. SAFETY REGULATIONS**

16.1 All boats intending to race shall check in with the RC via VHF channel 72 five (5) minutes prior to the first warning signal of the day. [DP] [NP]

16.2 A boat that retires from a race or decides to leave the racing area shall notify the race committee by hail or VHF channel 72 before leaving the racing area or as soon as possible thereafter.

[DP] 16.3 VHF Radios are mandatory for this series and must be monitored at all times while racing. [NP]

## 17. PRIZES

17.1 Prizes will be given as follows: first three places in each racing class.

## 18. RISK STATEMENT

18.1 RRS 3 states: 'The responsibility for a boat's decision to participate in a race or to continue to race is hers alone.' By participating in this event each competitor agrees and acknowledges that sailing is a potentially dangerous activity with inherent risks. These risks include strong winds and rough seas, sudden changes in weather, failure of equipment, boat handling errors, poor seamanship by other boats, loss of balance on an unstable platform and fatigue resulting in increased risk of injury. **Inherent in the sport of sailing is the risk of permanent, catastrophic injury or death by drowning, trauma, hypothermia or other causes.**

18.2 The race organizers (organizing authority, race committee, protest committee, host club, sponsors, volunteers or any other organization or official) will not be responsible for damage to any boat or other property or the injury to any competitor, including death, sustained as a result of participation in this event. By participating in this event, each competitor or coach agrees to release the race organizers from any and all liability associated with such competitor's participation in this event to the fullest extent permitted by law.

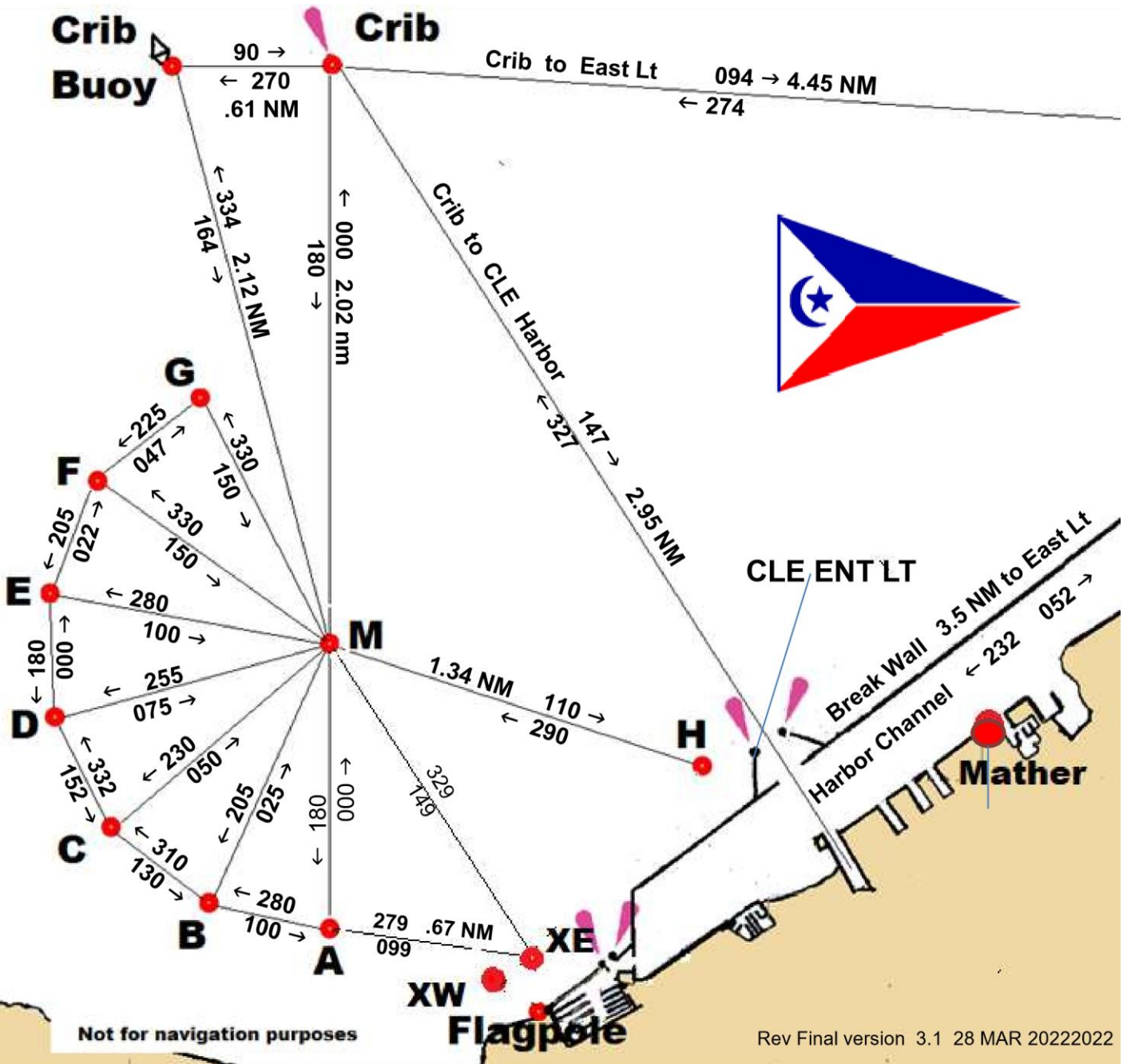
## 19. INSURANCE

19.1 Each participating boat shall be insured with valid third-party marine liability insurance with a minimum coverage of \$250,000 per incident or the equivalent, and that the boat has on board the minimum equipment required by the Ohio Department of Natural Resources, Division of Watercraft, and the United States Coast Guard. [DP]

## 20. FURTHER INFORMATION

20.1 For further information, please visit the NCWSA website, [www.ncwsa.net](http://www.ncwsa.net), or contact Delaney Imbler, Race Chair, [racing@ncwsa.net](mailto:racing@ncwsa.net).

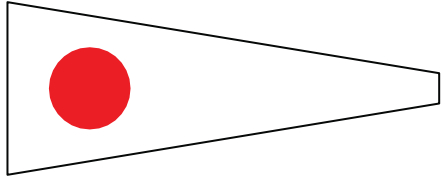
# Addendum 1 – Marks and Headings



Marks A thru G are each 1 NM from M.  
 Marks A thru G are each .43 NM apart.

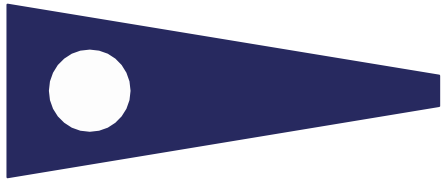
**Addendum 2 – Class Flags**

#1



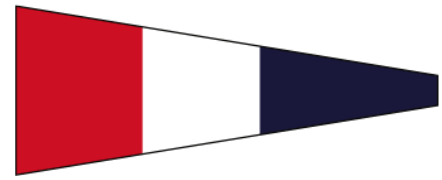
**PHRF**

#2



**JAM Fleet**

#3



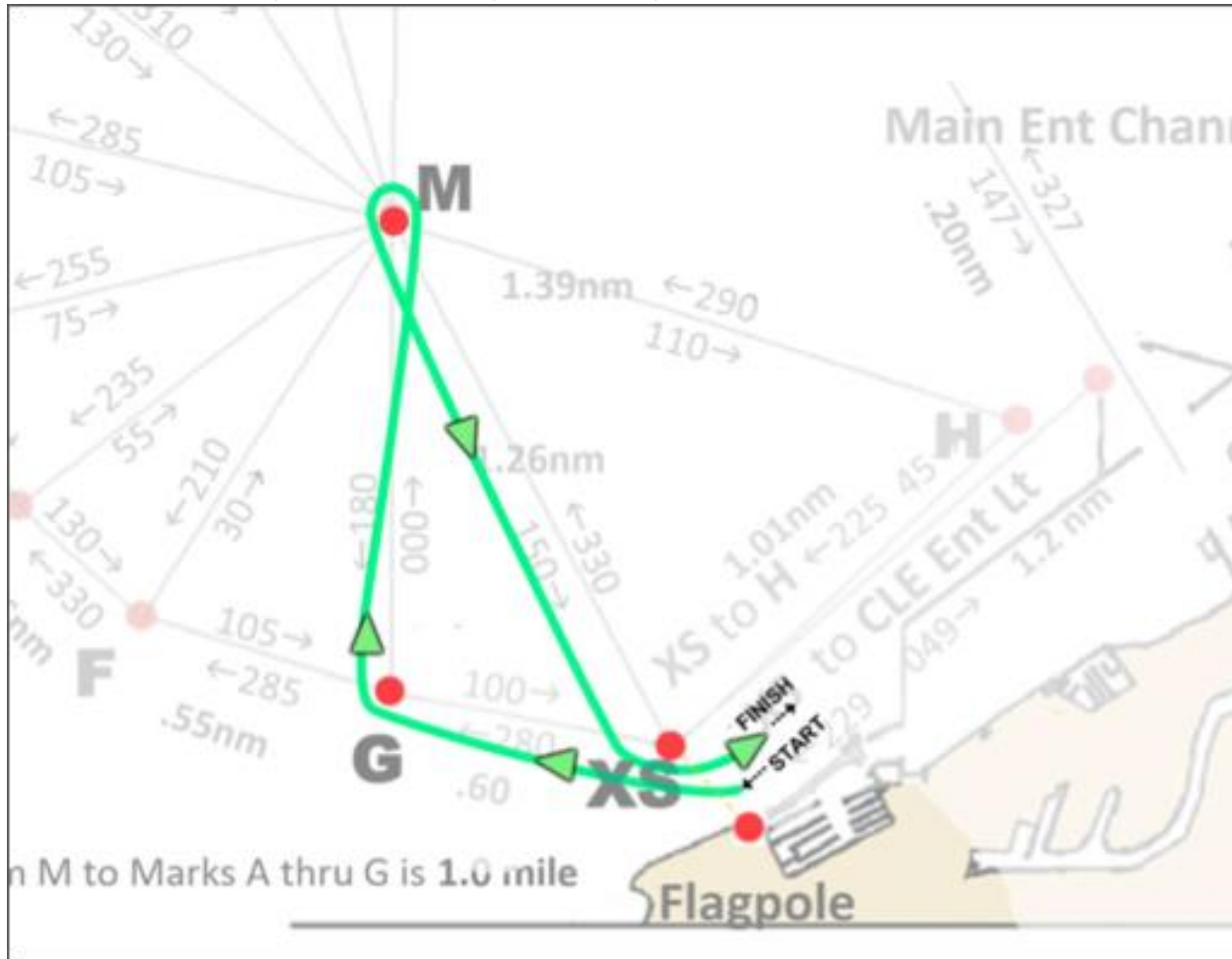
**Prep Fleet**

# Addendum 3 – Course Example Diagram START XS<sub>S</sub> – G<sub>S</sub> – M<sub>P</sub> – FINISH XS<sub>P</sub>

At the Start, XS shall be on Starboard side of the line. Next mark is G, and shall be passed to Starboard. Next mark is M, and shall be passed to Port.

At the Finish XS shall be on the Port side of the line.

“Start: XS to Starboard, Golf to Starboard, Mike to Port, Finish: XS to Port.”





# Addendum #4 - Coaches' Positions

Coaches are to remain along the centerline of the boat at all times. They are never to sit on the rail to help balance out the boat.